

# CSE 56T VA

## Ceiling Speaker - 6 W

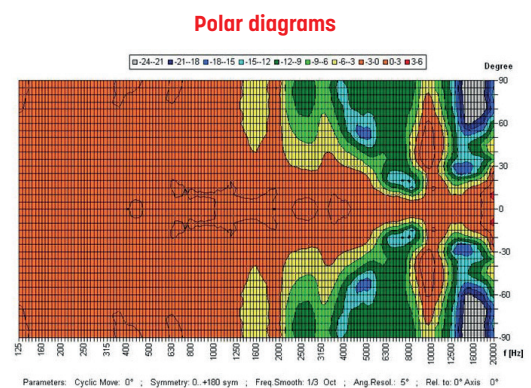
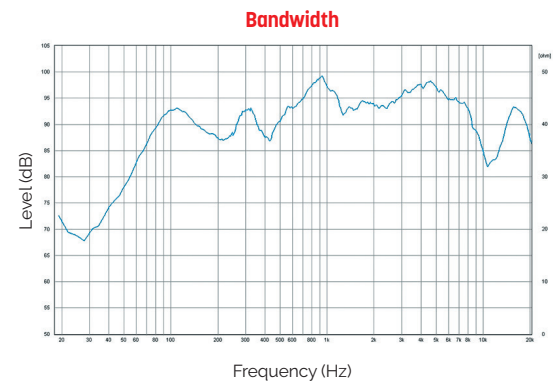


- The 6W powered speaker is equipped with a 130mm full-range loudspeaker and a 100V transformer with 3 power adjustments 6W, 3W and 1.5W.
- Thanks to an innovative air flow system, the CSE 56T VA provides sound characteristics which are attributed to a conventional bass speaker.
- An extremely flat construction method allows a low mounting depth of only 70mm, with less than 1kg product weight.
- For additional reliability the speaker is impregnated against wetness.
- Quick and easy mounting with spring clamps and short tension distance. Perfectly suitable for installations where the installation depth is very limited. This speaker is suitable for a ceiling strength of about 3 – 45mm.
- Optional specific RAL painting available: **PEINT PLAFONNIER** (minimum 25 pcs).
- Optional metallic fire dome available: **FD CSE 56T VA**

EN 54 24



Model	CSE 56T VA
Body & grill	Metal, plastic PET contact protection
Nominal power	6W
Nominal Impedance	666Ω
Power 100V Line	6 / 3 / 1,5W
Impedance	1,667 / 3,333 / 6,667Ω
Bandwidth	104 - 17 200Hz
Sensitivity (1W/1m)	86,8dB
SPL MAX 1m	98,3dB
Directivity (H-V) @ 500Hz	180°
Directivity (H-V) @ 1kHz	180°
Directivity (H-V) @ 2kHz	140°
Directivity (H-V) @ 4kHz	85°
Speaker	5"
Cone	Coated paper
Dimensions	Ø 181,5 x D 65mm (181,5 x 91,5mm fire dome)
Ceiling Cut-out	Ø 156mm
Weight	0,51kg (0,71kg with fire dome)
Operating temperature	-10°C / +55°C
Protection Index	IP21C
Color	RAL 9016



FD CSE 56T VA

<p>n°1438 22</p> <p>Certificate n°: 1438-CPR-0866</p> <p>Majorcom 56 chemin de la Flambeire 31300 TOULOUSE FRANCE</p>	<p><b>EN 54-24</b></p> <p>Speaker for voice alarm systems for systems for fire detection systems and fire alarm systems in buildings</p>
	<p><b>CSE 56T VA</b></p>
	<p><b>Type A</b></p>